



# WCEC

WHARTON COUNTY ELECTRIC COOPERATIVE

*Powering a brighter future since 1938.* Your Touchstone Energy® Cooperative 



## *88<sup>th</sup> Annual Meeting of Members*

WEDNESDAY, MAY 27, 2026

EL CAMPO MIDDLE SCHOOL

### 2026 CANDIDATES FOR WCEC BOARD OF DIRECTORS



**DISTRICT 2**

PATRICK KUBALA  
(INCUMBENT)



AUDRA ROD SMITH



**DISTRICT 5**

SAMUEL CRAIG HARDIN  
(INCUMBENT)



JON "CHIP" SHAW



**DISTRICT 8**

JIM W. HARTON  
(INCUMBENT)



OSCAR HURTADO



## PRESIDENT'S MESSAGE

**John Roach**

Once again, it is time for the WCEC Annual Meeting of Members. We encourage every member to attend the meeting to vote for their representatives on the board. This year, the meeting will be held as a drive-through event on Wednesday, May 27, at El Camp Middle School.

The board and I would like to express our sincere thanks for the opportunity to serve you, the members of the cooperative. We hope everyone is in good health and want to extend our thoughts and prayers to those who may be facing health challenges.

Wharton County Electric Cooperative is dedicated to delivering reliable and affordable electricity and the high level of service you expect. Through ongoing collaboration between our board and employees, we continue to plan strategically and enhance operations to prepare for the cooperative's future.

This year, the board is fulfilling one of its most important responsibilities—hiring a new GM/CEO. Gary Raybon has planned his retirement for the end of June. While Gary's retirement is well deserved, it will leave the board with big shoes to fill!

One of the greatest benefits of being in a co-op is that your interests always come first when making important decisions like this. As members ourselves, we plan and lead

with everyone's well-being in mind. We have partnered with the National Rural Electric Cooperative Association's executive search team to support us in the hiring process. They have led us through identifying the skills and qualities to best fit WCEC, finalizing the job listing, posting the position, and narrowing down the candidates. We are currently arranging interviews with our top choices, and plan to have the new CEO on board in June.

In making this decision and looking to the future, our responsibility remains clear: to continue delivering reliable, economical power while delivering the best service for our members. It has been an honor to serve as a director, and I am grateful for the trust you have placed in me over the years.

I want to thank my fellow board members and the WCEC employees for their continued commitment to our members and our communities. We look forward to seeing you at the Annual Meeting of Members.



## MANAGER'S MESSAGE

**Gary Raybon**

2025 was another successful year for Wharton County Electric Cooperative. In April, we achieved 1 million hours without a lost-time accident. This achievement represents twelve years of our employees' hard work and dedication to safety. I commend the employees on this accomplishment and thank the Board for their continued support of our safety programs.

WCEC members used a record 256,726,567 kWh of energy in 2025, surpassing 2024 by 4.93%. This increase shows a growth in both residential and commercial/industrial loads.

On the financial front, we met or exceeded all the metrics set forth by our bankers and Board Policies. Our assets surpassed \$90 million for the first time. With the patronage capital retirement credited to WCEC members' bills at the end of September 2025,

the total amount of patronage returned to our member-owners now stands at \$6.6 million.

WCEC is a stable, well-run organization with a bright future. I thank the membership for always electing board members who are caring and involved in the cooperative's operations.

On a personal note, this is my last Annual Meeting of Members as I will be retiring at the end of June.

I appreciate everything WCEC has done for my family and me through the years. I wish WCEC and the new CEO the best of luck in the future.

# FINANCIAL REPORT

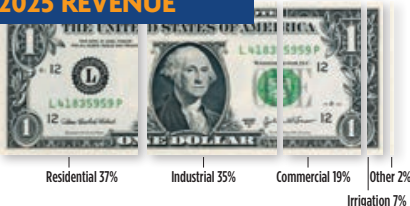
## BALANCE SHEET

	As of 12/31/25	As of 12/31/24
<b>ASSETS AND OTHER DEBITS</b>		
Total Utility Plant in Service	\$70,002,938	\$66,374,383
Construction Work in Progress	697,792	1,400,744
<b>Total Utility Plant</b>	<b>\$70,700,731</b>	<b>\$67,775,127</b>
Accumulated Provision for Depreciation	(12,215,649)	(11,038,605)
<b>Net Utility Plant</b>	<b>\$58,485,082</b>	<b>\$56,736,521</b>
Investment in Assoc. Org. - Patronage Capital	\$27,221,622	\$25,731,319
Cash - General Funds	\$773,854	\$328,295
Accounts Receivable - Sales of Energy (net)	2,409,277	2,540,007
Unbilled Revenue	198,338	29,451
Power Cost Recovery - Unbilled	318,459	141,881
Materials and Supplies	22,718	19,351
Other Current Assets	199,003	231,895
<b>Total Current and Accrued Assets</b>	<b>\$3,921,649</b>	<b>\$3,290,880</b>
Defferred Charges	\$584,694	\$700,770
<b>Total Assets and Equities</b>	<b>\$90,213,047</b>	<b>\$86,459,490</b>
<b>MARGINS AND EQUITIES</b>		
Memberships	\$21,705	\$21,575
Patronage Capital	47,192,466	44,464,839
Other Equities	44,276	163,159
<b>Total Margins and Equities</b>	<b>\$47,258,447</b>	<b>\$44,649,573</b>
<b>LIABILITIES AND OTHER CREDITS</b>		
Long-Term Debt	\$40,026,188	\$37,398,997
Note Payable	-	1,500,000
Accounts Payable	1,593,868	1,598,474
Other Current and Accrued Liabilities	1,334,544	1,312,446
<b>Total Liabilities and Other Credits</b>	<b>\$90,213,047</b>	<b>\$86,459,490</b>
<b>Equity as a Percent of Assets</b>	<b>52.385%</b>	<b>51.642%</b>
<b>Equity as a Percent of Capitalization</b>	<b>54.143%</b>	<b>54.418%</b>

## SUMMARY OF OPERATING STATEMENT

	As of 12/31/25	As of 12/31/24
Revenue	\$29,377,311	\$26,847,718
Less Cost of Power	19,027,761	17,314,599
Gross Margin	10,349,550	9,533,119
Distribution Expense - Operations	719,971	714,269
Distribution Expense - Maintenance	1,573,772	1,873,515
Consumer Accounting Expense	624,179	644,620
Customer Service & Information Expense	93,638	80,119
Sales Expense	374,837	379,197
Administration and General Expense	1,632,678	1,395,470
<b>Total Operations and Maintenance Expense</b>	<b>\$24,046,836</b>	<b>\$22,401,790</b>
<b>DEPRECIATION, TAX AND INTEREST EXPENSE</b>		
Depreciation and Amortization Expense	\$2,003,077	\$1,925,799
Interest Expense - Long-term Debt	1,925,439	1,844,281
Interest Expense - Other	75,342	52,571
Taxes	21	31,125
<b>Total Depreciation and Interest Expense</b>	<b>\$4,003,879</b>	<b>\$3,853,776</b>
<b>Cost of Electric Service</b>	<b>\$28,050,715</b>	<b>\$26,255,566</b>
<b>OPERATING MARGINS</b>		
Nonoperating Margins - Interest	\$1,326,596	\$592,152
Nonoperating Margins - Other	32,986	34,362
Generation and Transmission Capital Credits	8,168	36,194
Other Capital Credits and Patronage Dividends	1,410,350	1,245,589
Gain on Disposal of Property	253,322	274,786
	-	2,500
<b>Patronage Capital or Margins</b>	<b>\$3,031,422</b>	<b>\$2,185,584</b>

### 2025 REVENUE



### 2025 EXPENSES



# MINUTES OF 2025 MEETING

Wharton County Electric Cooperative, Inc. held its 87th annual membership meeting Wednesday, May 28, 2025 at the El Campo Middle School (ECMS) in El Campo, Texas. The school was chosen for its capability of allowing numerous vehicles in the registration line without hindering through traffic on the street. On May 1, 2025, each member of the cooperative was mailed, in the 87th Annual Meeting brochure, an Official Notice of Annual Meeting of Members to be held May 28, 2025.

Considering the continuing success of drive-through annual meetings over the past five years, the Board of Directors of Wharton County Electric Cooperative, Inc. voted to again hold the 2025 annual membership meeting as a "drive-through." No meal was served.

Registration began at 3:38 PM. Upon entering the ECMS driveway, members paused at one of two registration tents where WCEC employees registered members and gave them a ballot that consisted of the Election of Directors and approval of the Minutes of the 2024 Annual Membership Meeting, the 2024 Financial Report, and the President's Message and Manager's Report.

Members then drove to the front of the building for the second stop. Here each voting member received an attendance gift of an extension cord. Any children in the vehicle received a "pop-it" toy. As members continued driving forward, the third and last stop was the ballot drop-off area. Here the Ballot Committee collected the ballots, and members then exited the parking lot.

At 7:00pm sharp, no further entries were allowed into the parking lot. Any members still in line were allowed to register and vote.

After all ballots had been collected, they were directed to the WCEC Thomas Edison Room to count the ballots with the assistance of Cynthia Hernandez, Manager of Accounting. The Ballot Committee consisted of Gabriel Villareal, District 1; Madelyn Zbraneck, District 2; Tisha Zalman, District 3; Robert Schmidt, District 4; Sherri Hardin, District 5; Donna Wessels, District 6; Travis Cobb, District 7; Mary Lou Ellett, District 8; and Cathy Dornak, District 9.

The Director Nominees were: District 1 – Randy Turner and Tracy Floyd, Incumbent; District 4 – Matt Lutringer, Incumbent and Rick Graff; District 7 – Ryan Reck and John Roach, Incumbent.

After all ballots had been counted, Ballot Committee Chairman Gabriel Villareal certified winners of the Director Election. Those elected by simple majority vote were:

- District 1 – Tracy Floyd, Incumbent
- District 4 – Matt Lutringer, Incumbent
- District 7 – John Roach, Incumbent

General Manager/CEO Gary Raybon notified all candidates of the results.

The Approval Ballots were tallied with the following results:

- The Minutes of the 2024 Annual Membership Meeting were approved.
- The 2024 Financial Report was approved.
- The President's Message and Manager's Report were approved.

Each registered member will receive a \$20.00 bill credit applied to the June billing period. A drawing for a total of thirty (30) prizes took place Thursday morning, May 29th, at the WCEC headquarters office on Facebook Live. All entries were included for the final grand prize drawings. Grand prize winners were: \$100 free electricity – Gary Kemberling; \$150 free electricity – Garland Blaha; \$200 free electricity – St. Procopius Cemetery; \$300 free electricity – George "Buddy" Dornak, Jr.

The final count of voting members was 933 – an all-time high record in the history of Wharton County Electric Cooperative annual meetings.

# MEET THE CANDIDATES: DISTRICTS 2, 5, AND 8

## DISTRICT 2



**PATRICK KUBALA**  
INCUMBENT

“For the past six years, it has been an honor and a privilege to serve as your District 2 representative. We, the membership, the management, and all the employees, have one common goal—

when we plug an appliance in, turn on a tool, or flip a switch, we want the power to flow. You can rest assured that the board and all of the WCEC employees strive to obtain that goal day in and day out.

I have to say something about the staff at WCEC—they are a well-oiled machine, working together to solve the problems they encounter and deliver reliable, economical service. I congratulate them on a job well done.

Thank you for allowing me to serve on your behalf, and I would appreciate your vote for another three-year term.”

Kubala has lived in the WCEC service territory for 41 years. He has two grown children with his late wife, Becky. He is a graduate of El Campo High School and Texas A&M University.

He is a member of the Knights of Columbus 4th Degree, and a deacon at St. John’s Catholic Church in New Taiton.

His most important function is being a grandfather to his two grandchildren, Jett and Kate.

Kubala has served on the WCEC Board for six years. He is a Credentialed Co-op Director and is the current Assistant Secretary/Treasurer.



**AUDRA ROD SMITH**

“Rural electrification allows people to live and operate in rural areas, rather than moving to urban areas. It keeps resources available to all types of persons and businesses.”

Smith has been a WCEC member for 10 years. She and her husband, Kyle, have one son. She graduated from Texas A&M University and South Texas College of Law. Smith is an attorney with her own practice in El Campo.

Smith spends significant time speaking to and educating the public and other professionals on legal issues and topics in agricultural law, primarily real estate. She is also the current chairman of El Campo Cub Scouts Pack 196, a director of several small non-profit organizations, and an advisor to several other non-profit organizations in the agricultural sector.

## DISTRICT 5



**SAMUEL CRAIG HARDIN**  
INCUMBENT

“It has been an absolute honor and privilege to serve, for these last six years, as your District 5 representative. This time serving as a board member has been an amazing learning experi-

ence for me. The many facets of how electrical power is provided to us are quite interesting, and the more I learn about the process, the more impressed I am by how efficiently and effectively our WCEC cooperative system makes it happen. Having completed my credential education courses, I have also had the opportunity to learn more about the business aspects of the production and sale of electrical power.

I grew up in rural Ganado and graduated from Ganado High School. I attended the Wharton County Jr. College, transferred to Sam Houston State University where I graduated. I taught Agricultural Science in Kingwood for three years and moved back home and taught Agricultural Science and Metal Fabrication at the El Campo High School for thirty-four years. I am retired and am currently self-employed. My wife and I have lived in district five for forty-five years and we have two grown sons that both attended and graduated from the El Campo High School, Wharton County Jr. College, and Texas State University.

The challenges and opportunities that face our cooperative concerning standard production sources, as well as alternative sources such as wind and solar, changes in regulations, and the availability of natural gas and coal are important topics for discussion to ensure the reliability of the energy we have all come to rely on. As a board member, I look forward to being part of providing proactive solutions to ensure reliable, affordable electrical service for WCEC members.

It has been my good fortune to be part of this exceptional group of people who make up WCEC. Providing reliable, safe, and affordable electrical service is always priority one. I am proud to be a part of WCEC as a board member and would be honored to continue serving you in that capacity, and would really appreciate your vote.”

Hardin has served on the WCEC Board for six years. He is a Credentialed Co-op Director.



**JON “CHIP” SHAW**

“I am excited to learn about the process of rural electrification.”

Shaw has been a WCEC member for 10 years. He and his wife, Christine, live in El Campo.

He is a journeyman electrician and owner of All Phase Electric & Construction.

Shaw is a U. S. Army veteran and volunteer firefighter. He is also an electrical coordinator for British Petroleum and has designed, coordinated, and led projects in five different countries.

**ONE MEMBER, ONE VOTE:** WCEC Members are allowed one vote per membership. Even if you have multiple accounts, they may be listed under a single membership. In this case, you will only receive one ballot. If you have questions about your accounts, please call our office at (979) 543-6271 before the Annual Meeting. All WCEC members vote for the full slate of Board candidates regardless of which district they reside in.

## DISTRICT 8



**JIM W. HARTON**  
INCUMBENT

"It has truly been an honor and a privilege to serve as your District 8 representative for the past nine years.

During this time, I have earned my Credentialed Co-op Director certification through the National Rural Electric Cooperative Association.

We have encountered some very challenging events over the past few years, including Hurricane Harvey, Winter Storm Uri, COVID-19, Hurricane Beryl, and others. Through these events, the co-op board, staff, and employees continue to work diligently to provide you, the members, with reliable and affordable electric power. Electric cooperatives must keep up with new technologies, federal government and regulatory constraints, and resiliency and reliability that continually challenge the energy industry.

It would be my honor to serve another term and continue working on your behalf through the challenges that lie ahead for us all.

I was raised on a farm in Danevang and experienced firsthand the importance and impact of rural electrification on our lives. My wife, Jennifer, and I continue to live in Danevang on the farm where I grew up. I am retired from Fort Bend ISD and Rope Works, Inc. I graduated from ECISD and Sam Houston State University, majoring in Agriculture and minoring in Physical Education. I am presently a director of South Texas Elec-

tric Cooperative, a member of St. Andrew's Catholic Church, a member of Knights of Columbus Council #9394, and a director of the Danish Heritage and Preservation Society.

Once again, thank you for allowing me to serve on your behalf, and I would appreciate your support and vote to serve another term."

Harton has served on the WCEC Board for nine years and is currently the Vice President. He is a Credentialed Co-op Director and sits on the Board of Directors for South Texas Electric Cooperative.



**OSCAR HURTADO**

"Rural electrification improves quality of life, supports agriculture and small business, and expands access to education, healthcare, and reliable, safe

energy."

Hurtado has been a WCEC member for 7 years. He graduated from Coastline Community College and the University of Houston, earning a mechanical engineering technology degree. He is an OPS Supervisor at OxyChem.

Hurtado is a U.S. Navy veteran and now continues to support his fellow veterans through the V.F.W. He has previously served as Vice President of an HOA in San Antonio. He is currently the President of the Markham Industrial Group, where he leads initiatives, supports community development, and fosters strong teamwork.



### 2025 WCEC BOARD OF DIRECTORS:

The 2025 Wharton County Electric Cooperative Board of Directors and staff are (front, l-r) Vice President Jim W. Harton; President John Roach; (back) General Manager/CEO Gary Raybon; Matt Lutringer, Tracy Floyd; Gary Charbula; George "Buddy" Dornak Jr.; Secretary/Treasurer Gus Wessels Jr.; Assistant Secretary/Treasurer Patrick Kubala; and Samuel Craig Hardin.

**Thank You To Our 2025 Board of Directors!**



# 2026 YOUTH TOUR DELEGATES

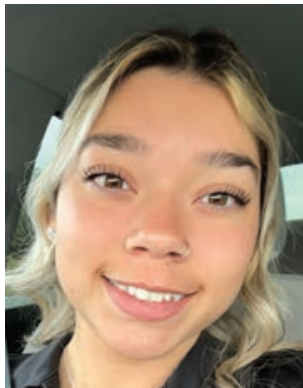


**PAISLEY HLAVATY**  
El Campo High School  
Daughter of  
Douglas & Barbara Hlavaty  
District 8



**BRODY PAYNE**  
El Campo High School  
Son of  
Brayden & Brittanie Payne  
District 9

## SHIRLY STUBBS FEINSTEIN SCHOLARSHIP RECIPIENTS



**MAYSÉN MANRRIQUEZ**  
Daughter of  
Mario & Kate Manriquez



**BRODY PAYNE**  
Son of  
Brayden & Brittanie Payne

The Shirley Stubbs Feinstein Scholarship was initiated in 1987 by Frank N. Stubbs upon his retirement. Mr. Stubbs served as General Manager of Wharton County Electric Cooperative, Inc. from 1967-1987. The scholarship was funded initially through contributions made instead of retirement gifts to Mr. Stubbs and is in memory of his late daughter Shirley Stubbs Feinstein. The scholarship is only available to the children of WCEC employees. Since its formation, 50 children of WCEC employees have received a scholarship to further their education. In 2020, Mr. Stubbs' daughter and son-in-law, Sugar and Mike Barnes, made a generous donation to the scholarship's endowment fund, and the Shirley Stubbs Feinstein Endowment Fund was officially formed. This gift will ensure that Shirley Stubbs Feinstein will be honored for many years to come by WCEC and its employees.



## OPERATION ROUND UP 2025 CHARITABLE FUND DISTRIBUTION

Adopt A Grandparent  
Blessing Cup Storehouse  
Boys & Girls Club of El Campo  
Danish Heritage Center  
El Campo Lady Lions Club

Gift of Adoption-Texas Chapter  
Gulf Coast CASA  
Helping Hands Ministry  
Houston Hospice-El Campo  
Manna Meals

Rainbow Room  
The Crisis Center  
Wharton County Cares  
Wharton County Youth Fair  
WCYF Scholarship Fund

# EMPLOYEE SERVICE MILESTONES



**45 YEARS**

**MARY ARREDONDO**  
Manager of Consumer Services



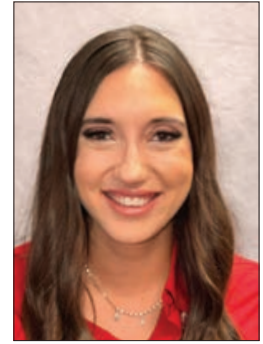
**10 YEARS**

**RICK GARZA JR.**  
Journeyman Lineman



**10 YEARS**

**BRAYDEN PAYNE**  
Journeyman Lineman



**5 YEARS**

**ASHLEY WELLS**  
Consumer Service Rep.

## YOUR WCEC HOME TEAM

Brenda Moreno .....	48	Brayden Payne.....	10
Janice Kulcak.....	47	Selena Delapena.....	9
Mary Arredondo .....	45	Shelly Schulz .....	9
Gary L. Raybon.....	42	Gene Puryear .....	9
Richard Arnett.....	39	Lance Kolafa.....	9
Keith Beal.....	29	Carol Diaz.....	8
Mario Manrriquez.....	27	Jayson McKeon .....	7
Tim Bohuslar.....	21	Ashley Wells.....	5
Miriam Piloto.....	21	Shane Langston .....	4
Willie Stavena (part-time) .....	21	Cynthia Hernandez .....	4
Lee Wayne Roddy .....	19	Aric Wright .....	3
Chris Cavness .....	18	Cole Falcon.....	2
Nathan Danielson.....	13	Juan Nunez.....	2
Dusty White .....	12	Carlos Machado .....	1
Keaton Hubbell .....	11	Brandy Esquivel.....	3 months
Ricky Garza Jr. ....	10	Landon Sekulic .....	3 months

## 2025-2026 RETIREES



**LINDA  
BACAK**

**CASHIER**  
26 YEARS OF SERVICE



**VANCE  
JAKS**

**SR. ENGINEERING TECHNICIAN**  
31 YEARS OF SERVICE



**DONALD  
PRIESMEYER**

**METER TECHNICIAN**  
36 YEARS OF SERVICE



**OFFICIAL BALLOT**  
**WHARTON COUNTY ELECTRIC COOPERATIVE, INC.**  
 ANNUAL MEETING OF MEMBERS | WEDNESDAY, MAY 27, 2026

**ELECTION OF DIRECTORS**

**DISTRICT 2:** ✓ CHOOSE ONE CANDIDATE FROM THIS DISTRICT.



**PATRICK KUBALA**  
**INCUMBENT**



**AUDRA SMITH**

**DISTRICT 5:** ✓ CHOOSE ONE CANDIDATE FROM THIS DISTRICT.



**SAMUEL CRAIG HARDIN**  
**INCUMBENT**



**JON "CHIP" SHAW**

**DISTRICT 8:** ✓ CHOOSE ONE CANDIDATE FROM THIS DISTRICT.



**JIM W. HARTON**  
**INCUMBENT**



**OSCAR HURTADO**

✓ **VOTE FOR ONE CANDIDATE IN EACH DISTRICT REGARDLESS OF WHERE YOU LIVE.**

Candidate information was published in the May 2026 edition of Texas Co-op Power Magazine and is also available at MyWCEC.coop/AnnualMeeting.

**APPROVAL OF ANNUAL REPORTS**

The following items were published in the May 2026 edition of Texas Co-op Power Magazine. They are also available online at MyWCEC.coop/AnnualMeeting.

✓ **PLEASE CHECK 'YES' OR 'NO' FOR EACH ITEM.**

I approve the Minutes of the 2025 WCEC Annual Meeting.

YES  NO

I approve the 2025 WCEC Financial Report.

YES  NO

I approve the President's Message and Manager's Message.

YES  NO

**DO NOT FOLD BALLOT**

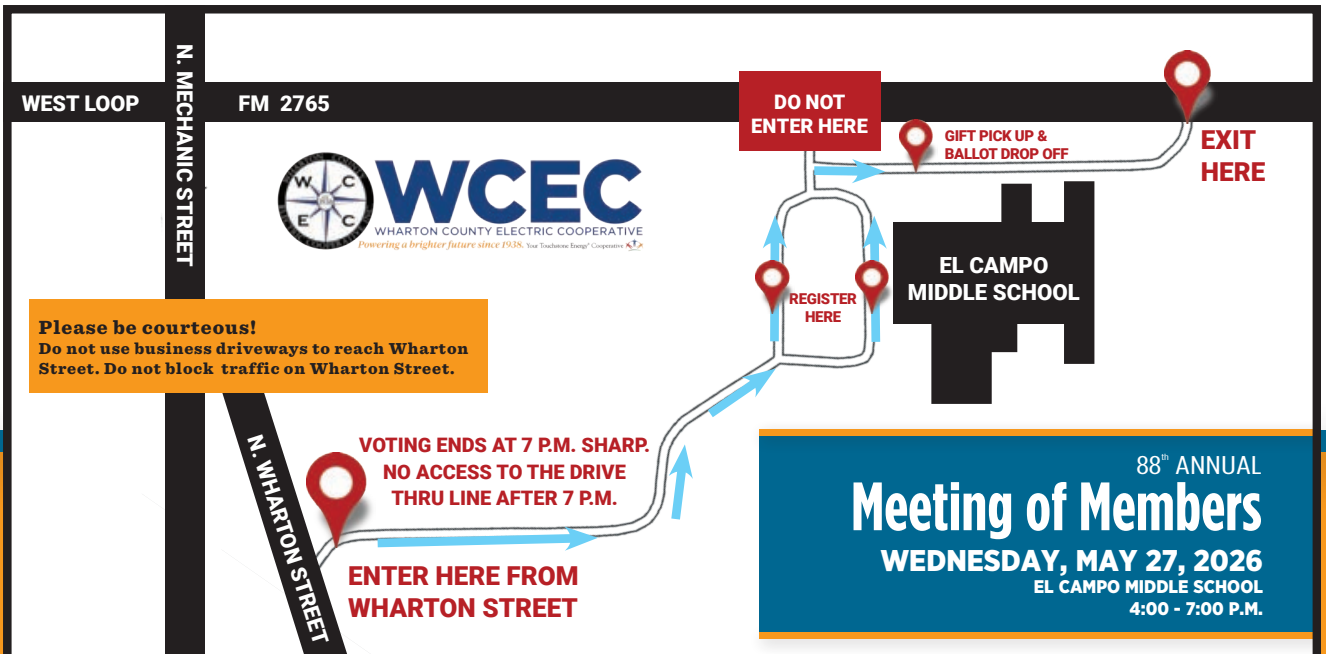
**MEETING PROCEDURE:**

**ONE VOTE PER MEMBERSHIP.**  
**MUST BE PRESENT TO VOTE.**

Drive-through line will open at 4:00 p.m. Voting will end at 7:00 p.m. SHARP. No access to the drive-through line is allowed after 7:00 p.m.

- Enter El Campo Middle School parking lot through the entrance on **North Wharton Street**. See map below.
- There will be multiple Registration stations in the ECMS parking lot. You will receive an Official Ballot for each membership. To speed up the drive-through process, **please look over the Sample Ballot to determine your choices before the meeting**. Read more about the candidates on Page 4 of the Annual Report.
- Pick up your attendance gift and drop off your completed ballot with the Balloting Committee.
- Voting members get a \$20 credit on next month's bill and are entered into a prize drawing. Winners will be notified by phone.

**WE LOOK FORWARD TO SEEING YOU!**



**VOTING ENDS AT 7 P.M. SHARP.**  
**NO ACCESS TO THE DRIVE THRU LINE AFTER 7 P.M.**

**ENTER HERE FROM WHARTON STREET**

88<sup>th</sup> ANNUAL  
**Meeting of Members**  
**WEDNESDAY, MAY 27, 2026**  
 EL CAMPO MIDDLE SCHOOL  
 4:00 - 7:00 P.M.