



# ANNUAL REPORT

WHARTON COUNTY ELECTRIC COOPERATIVE | ANNUAL MEETING OF MEMBERS  
WEDNESDAY, JUNE 22, 2022 | 4:00 - 7:00 P.M.  
EL CAMPO MIDDLE SCHOOL



20  
21

The 2021 Wharton County Electric Cooperative Board of Directors and staff are (l-r) Patrick Kubala; Assistant Secretary/Treasurer Gus Wessels Jr.; Calvin Pfeil Jr.; Samuel Craig Hardin; Paul Phillips Jr.; Judy Peter; President Rick Graff; Secretary/Treasurer Jim W. Harton; Vice President John Roach; and General Manager/CEO Gary Raybon.

## 2022 BOARD OF DIRECTOR NOMINEES

DETAILS ON PAGE 4 OF THIS REPORT



ROY WILLIAMS



TRACY FLOYD

**DISTRICT 1**



RICK GRAFF  
(INCUMBENT)



MATT  
LUTRINGER

**DISTRICT 4**



MATTHEW SOHRT



JOHN ROACH  
(INCUMBENT)

**DISTRICT 7**

# PRESIDENT'S REPORT



## *There is Strength in Community*

While we are celebrating this year's annual meeting as a "drive-thru" event, I continue to look forward to gathering under one roof again in the future. While the drive-thru is convenient and safe, gathering to visit, share a meal, and conduct our annual meeting strengthens our community bonds. It is these bonds of community that make WCEC so unique. In fact, it is because of these bonds that WCEC exists.

Imagine the year 1937. The founders of WCEC gathered at kitchen tables under coal oil lamps or by candlelight with their friends and neighbors. They were able to convince them that together, as a community, they can build and sustain a safer way of lighting homes or powering an icebox that won't need ice, or using a freezer to store food. Eventually, they will be able to heat and cool their homes to a comfortable temperature! Those folks truly believed in the promise of the future. We stand on the foundation their work created. The reliable electrical power we now enjoy is something to appreciate and be grateful for.

With that thought in mind, our membership in South Texas Electric Cooperative is advantageous to WCEC and, by extension, to you. STEC generates, transmits, and advocates for its nine member cooperatives. STEC can be thought of as the perfect "Big Brother" who looks out for you, meets your needs, and enables you to grow and be successful. One of the aftereffects of Winter Storm Uri was to create some urgent issues for state officials responsible for grid reliability. STEC's work in the state regulatory and legislative framework is extensive and vital to the future of reliable power generation and transmission. The market reform proposal that STEC is working to have enacted incents and rewards reliable generation.

Please realize that power generation facilities with fuel on-site, namely nuclear and coal, are the most reliable source of power generation. Natural gas and fuel oil fired facilities are dependable and can vary their power output to meet demand. However, their fuel sources are transported by pipeline or tanker truck, and adverse weather can affect fuel delivery.

STEC employs all of the above methods to meet our demand as well as contracting wind power and solar power when available. The STEC and WCEC Boards often discuss that the term "renewable" is inaccurate. Power generation from these sources is better described as intermittent because the wind doesn't always blow, nor will the sun shine in concert with our needs. And currently, there is no way to store power reliably in scale with power grid demand. Battery technology is in its conception and incubation phase.

With certainty, I can state that STEC will continue to utilize all economically available resources to meet our demand in a dependable and reliable fashion.

# MANAGER'S REPORT



**GARY RAYBON**  
General Manager/CEO

## *Success in 2021 Despite Setbacks*

There is more than one way to measure success — 2021 proved that.

While sales and resulting margins were below expectations, Wharton County Electric Cooperative succeeded in its core mission of providing reliable and economical electricity to its Membership. In 2021, Mother Nature looked favorably on us with milder temperatures and above average rain throughout most of the year. As a result, heating, cooling, and irrigation sales were lower than usual for WCEC. As a non-profit, our goal is to cover our costs and only sell you the power you need, even if this means lower margins for the cooperative. Every dollar you are not sending WCEC is a win for you, our members.

Over the past year, we continued to look forward to a more normal way of life. The Board has moved back to the board room, masks are less prevalent, and the business of WCEC has continued. Meetings have been held on a regular schedule. We have completed a Strategic Planning session to provide a blueprint for the near and long-term future to prepare us for continued success. Two new Board members have been welcomed and have begun completing their Credentialed Cooperative Director course of study. Several long-term staff members have retired. They, along with management, have done what leaders do, "Create leaders to take their place."

Our growth continues at a sustainable pace. Currently, we distribute power from STEC with 1,263 miles of line to over 6,000 meters. We serve over 4,000 members. In every discussion, deliberation, and decision, we keep our Mission Statement at the forefront. We do this to ensure that we meet our commitment to serve our neighbors with reliable, economic electrical power, products, services, and leadership that will have a positive influence on the area we serve.

I am pleased to report to you that due to the dedication, skill, professionalism, and knowledge of the management and staff of WCEC, the cooperative is financially sound. We are well-staffed with properly trained and equipped employees, and they are motivated to continue meeting your needs as members. It must be noted that the Board, management, and staff are grateful for your continued dedication and support of our co-op. My gratitude is owed to the Board for their work and support, to the WCEC management and staff, and certainly to our members!

Powering forward,  
Rick Graff



On the power supply side, WCEC was able to come through Winter Storm Uri relatively unscathed thanks to conservative and prudent planning made by our power supplier, South Texas Electric Cooperative. This is an impressive feat considering the outcome for other utilities in the ERCOT region. WCEC members will not be saddled with millions of dollars of debt as we are seeing across the ERCOT market relating to the winter storm.

The WCEC Board and employees are very aware that every dollar that comes through the door comes from our members. After much study, debate, and deliberation, the Board approved a 1.0% overall rate increase to be effective April 1, 2021. This was to be the first increase of its kind since January 2010. Shortly after the winter storm, when we were not sure of the costs we might be facing, the Board took action to delay the rate increase until further notice. It eventually went into effect on September 1, 2021. Lack of growth in sales and already seeing the impact of increased inflation, the Board once again acted and approved a 1.0% rate increase effective January 31, 2022. These two rate increases raised the average residential WCEC bill by \$4.57/month.

One of the biggest successes this year is that each and every employee returned to their families safely every day. I applaud the employees for creating a safety culture that has allowed the men and women of WCEC to work for eight years without a lost-time accident. I thank the Board for supporting our safety initiatives. Without buy-in from the Board, safety programs are ineffective at best.

I also want to take a moment to personally thank recently retired employees Wesley Lange and Clarence Kunz for their dedication, wisdom, and experience. Wesley retired after 52 years of service, and Clarence retired with 49 years of service to the members of WCEC. These two gentlemen have left an indelible mark on WCEC. I wish Wesley and Clarence much happiness in the next chapter of their lives.

In my usual fashion, I end this report by thanking you, our members, for allowing me to serve as your General Manager. All of us here at WCEC are just a phone call or office visit away. Let us know how we can better serve you.

## MINUTES OF 2021 MEETING OF MEMBERS

Wharton County Electric Cooperative, Inc. held its 83rd annual membership meeting Wednesday, June 16, 2021 at the El Campo Middle School (ECMS) in El Campo, Texas. The school was chosen for its capability of allowing numerous vehicles in the registration line without hindering through traffic on the street. On June 1, 2021, each member of the cooperative was mailed, in the 83rd Annual Meeting brochure, an Official Notice of Annual Meeting of Members to be held June 16, 2021.

In light of the global coronavirus COVID-19 pandemic over the past eighteen months, the Board of Directors of Wharton County Electric Cooperative, Inc. voted to again hold the annual membership meeting as a "drive-through" for the safety of both cooperative members and employees. No meal was served. To abide by the social distance rule, members remained in their vehicles at all times.

Registration began at 3:30 PM. Upon entering the ECMS driveway, members paused at the either of two registration tents where WCEC employees registered members and gave them a two-part ballot. The first part of the ballot was the Election of Directors; the second part was the Approval Ballot allowing members to approve the Minutes of the 2020 Annual Membership Meeting, the 2020 Financial Report, and the President and Manager's Report.

Members then drove to the front of the building for the second stop. Here each voting member received an attendance gift of a 25-foot extension cord. Any children in the vehicle also received an attendance gift, which was a soft backpack.

As members continued driving forward, the third and last stop was the ballot drop-off area. Here the pre-selected Ballot Committee collected the ballots. Members then exited the parking lot.

At 7:00pm sharp, no further entries were allowed into the parking lot. Any members still in line were allowed to register and vote.

After all ballots had been collected, the Ballot Committee consisting of Bryan Popp, District 1; Madelyn Zbranek, District 2; Darell Hoffer, District 3; Steven Goetsch, District 4; Sherrie Hardin, District 5; Herman

Mauch, Jr., District 6; Tiffany Alley, District 7; Mary Lou Ellett, District 8; and Albert Rucka, District 9, were directed to the WCEC Thomas Edison Room to count the ballots with the assistance of Patsy Metting, Manager of Accounting. Director Nominees were:

- District 3 – Judy Peter, Richard L. Clark
- District 6 – Gus Wessels, Jr., Incumbent, Brent Cerny
- District 9 – Calvin Pfeil, Jr., Pamela R. Hunt, Christopher Barbee

Immediately after all ballots had been counted, winners of the Director Election were certified by Ballot Committee Chairman Darell Hoffer. Those elected by simple majority vote were:

- District 3 – Judy Peter
- District 6 – Gus Wessels, Jr.
- District 9 – Calvin Pfeil, Jr.

General Manager/CEO Gary Raybon called all candidates and notified them of the results.

The Approval Ballots were tallied with the following results:

- The Minutes of the 2020 Annual Membership Meeting were approved.
- The 2020 Financial Report was approved.
- The President and Manager's Report were approved.

Each registered member will receive a \$20.00 bill credit that will be applied to the June billing period. Registration cards were printed for each voting member, and the cards were put in a drawing for prizes. The drawing for twenty (20) prizes took place on Thursday, June 17th at the WCEC headquarters office on Facebook Live. All name cards were included for the final grand prize drawings. Grand prize winners were:

- \$100 free electricity – Donald Capak,
- \$100 free electricity – Addrina Budaus
- \$100 free electricity – Milton Johnson
- \$300 free electricity – Yajaira Pedroza

The final count of voting members was a Wharton County Electric Cooperative history-breaking record of 784.

# DIRECTOR ELECTIONS — THREE-YEAR TERMS

## DISTRICT 1



### ROY WILLIAMS

"The process of providing electrical services to rural areas is both a challenging and rewarding experience. Often this service can be taken for granted as many may be unaware of the number of individuals and groups required to achieve the desired results. We can reflect on the winter of 2021 and remind ourselves how grateful we were when power was restored. Since my background is in chemical operations and project management, I had an appreciation but perhaps did not reflect deeply enough on power generation as it relates to electricity.

As consumers of power and electricity in our districts, we may not see the vast diversity of needs and the challenges involved that allow us to simply flip a switch. In more rural areas, connections to provide this service can be further apart from each other and can require more manpower and equipment.

As Rural citizens, we may have more of the same requirements for electricity as those residing in urban areas. However, in addition to residences, there may be additional structures such as barns, storages, and home offices that have those additional needs. While there may be challenges, the rewards of providing power to residences, farms and businesses is essential to the growth in our communities.

Both energy and electrical power can be directly correlated to our future needs and freedoms. The proper regulation and administration of our resources are essential to life in our districts. The growth and the future sustainability of our communities is heavily dependent upon the many services provided by entities such as Wharton County Electric Cooperation. These entities require continuous plans for succession plans for its growth.

As a candidate for the District 1 position on the Board of Directors, It is my sincere hope that I am elected to serve our communities and utilize my experience as an Operations and Project Manager to facilitate both growth and the services provided by WCEC."

Williams has lived in the WCEC service territory for 36 years. He and his wife, Grenda, have two grown children. He is a graduate of Garwood High School and Texas Southern University where he earned a B.B.A. Williams is currently the District Secretary for Rice Consolidated School District.

He is actively involved in the Concerned Citizens of Colorado County and Alliance for a Cleaner Environment.



### TRACY FLOYD

"As a WCEC Member for some time, I feel rural electrification provides a personal and competitive alternative to large conglomerates. We had our challenges during the hard freeze a couple of years ago, but feel the co-op was much more efficient and expeditious with the way the power restoration was handled."

Floyd has lived in the WCEC service territory for ten years. He and his wife, Lisa, have two teenage children. He is a graduate of Jacksonville Jr. College, attended Texas A&M University, and has a B.S. in Kinesiology from the University of Texas. Floyd now works in sales.

He is the current Vice President/Treasurer/Secretary of the Garwood Lions Club, a committeeman on the Colorado County Area Go-Texan Committee, and is a member of the Knights of Columbus #3371.

## DISTRICT 4



### RICK GRAFF INCUMBENT

"I will begin with my sincere thanks for your vote of support in two previous elections. It has been an honor and privilege to serve you as a Director and I humbly ask for your support as I seek a third term.

We can all agree on the benefits of both reliable electrical power and Internet service. They are two of the cornerstones of our productivity and key to our prosperity. Your WCEC Board is responsible to you, our members to ensure these services at a reasonable cost.

Last year, I was elected by the Board to serve as your WCEC Board President. Two years ago, I was also elected to serve as a Board member of South Texas Electric Cooperative. The role of STEC is to generate and transmit our power. It is an honor to serve in these roles and it is my goal to fulfill my duties well.

My family and upbringing on a farm and ranch built a foundation that helped to prepare me for my education at Texas A&M, my employment with HEB and then, small business ownership. Since 1994, my wife, Keri and I have owned and operated Modern Cleaners. We have now grown to seven locations and have thirty-two employees.

We are proud to call El Campo home. We both have lived and worked in other towns and realized quickly that Wharton County is a special place. Since 1989, it has been our home. Our granddaughter, Abigail, is now two and is keeping us all joyfully busy. Cade, our oldest, is employed with Enterprise Products and his wife, Samantha is a Counselor with the El Campo ISD. Our youngest son, Matthew has finished his Master of Divinity Degree from Yale University and is teaching at a local school.

To close, I again ask for your vote. My knowledge of the electrical industry and the key role of cooperatives is still growing. No small part of that motivation is the professionalism of the management and staff of WCEC. The manner that your local team takes care of their duties is impressive. And it is key to mention that the skill and knowledge exhibited daily by WCEC management and staff is a source of inspiration to the Board. They are truly dedicated to serving you, our members. If re-elected it will be an honor to continue in your service. MANY THANKS!"



### MATT LUTRINGER

"Being self-employed for 20 years, I know the importance of a home town service company. That is what WCEC provides. They are a stable electric company to our community. From the staff in the office to the men in the field, rain or shine, they are giving us a service that most take for granted. Thanks for a job well done."

Lutringer has lived in the WCEC service territory for 58 years. He has two grown children. He is a graduate of El Campo High School and Wharton County Junior College. He is self-employed at Matt's Appliance Service.

## DISTRICT 7



### MATTHEW SOHRT

"Rural Electrification allows cooperatives to give back to their communities. With rural electrification, members have a voice in the policymaking and operations of the cooperative. Rural electrification provides reliable power at a competitive price while improving the quality of life for cooperative members. Because a rural cooperative is locally run, the community benefits through job creation and retention and community outreach programs."

Sohrt has lived in the WCEC service territory for 14 years and is currently a teacher/coach at El Campo High School. Next school year, he will be the Boys Athletic Coordinator at El Campo Middle School. Sohrt and his wife, Lindsey, have two children. He is a graduate of El Campo High School and Texas A&M University, earning a Bachelor of Business Administration.

Sohrt is a member of the Texas High School Coaches Association, St. Andrew's Catholic Church, where he sings in the choir, and the Knights of Columbus Council 2490.



### JOHN ROACH INCUMBENT

"Due to changing times and the winter storm, it has taught us what it is to keep the electricity on and to manage expenses to have the lowest possible electricity for our members. It's been our main focus to keep our cost of electricity at its lowest and to keep WCEC moving forward into the future.

It is important to have the experienced workforce that is at WCEC to keep our system in great condition so that we can keep the comfort of our homes on."

Roach is a lifelong resident of the El Campo area and is retired from Hlavinka Equipment Company. He and his wife, Cheryl, have two adult daughters and seven grandchildren.

He graduated from El Campo High School and Wharton County Junior College. He is a member of St. John's Catholic Church and the Texas Cattleman Association. Roach currently serves as Vice President of the WCEC Board of Directors and is a Board Member of San Miguel Electric Cooperative.

## WHARTON COUNTY ELECTRIC COOPERATIVE, INC. Annual Membership Meeting – Wednesday, June 22, 2022

### OFFICIAL BALLOT – ELECTION OF DIRECTORS

Fill the circle beside the Candidate of your choice. **VOTE FOR ONE IN EACH DISTRICT.**

#### VOTE FOR ONE IN

#### **District #1**

Garwood, Nada, and South Colorado County

- Roy Williams
- Tracy Floyd

\_\_\_\_\_  
Write-In

#### VOTE FOR ONE IN

#### **District #4**

Louise, Hillje, Plainview, and Western Acres

- Rick Graff (*Incumbent*)
- Matt Lutringer

\_\_\_\_\_  
Write-In

#### VOTE FOR ONE IN

#### **District #7**

Southeast of El Campo, South of Pierce, Pierce Estate and Five Corners

- Matthew Sohrt
- John Roach (*Incumbent*)

\_\_\_\_\_  
Write-in

### OFFICIAL BALLOT – APPROVAL OF ANNUAL REPORTS

The following items were mailed to you as part of the June 2022 Texas Co-op Power Magazine.

**Please check YES or NO for each item.**

I approve the Minutes of the 2021 WCEC Annual Meeting.

\_\_\_ YES

\_\_\_ NO

Reason: \_\_\_\_\_

I approve the 2021 WCEC Financial Report.

\_\_\_ YES

\_\_\_ NO

Reason: \_\_\_\_\_

I approve the President's Report and Manager's Report.

\_\_\_ YES

\_\_\_ NO

Reason: \_\_\_\_\_



**JIM W. HARTON**  
Secretary/Treasurer

Feb. 16, 2022

## INDEPENDENT AUDITOR'S REPORT

Wharton County Electric Cooperative, Inc.  
El Campo, Texas

We have audited the accompanying financial statements of Wharton County Electric Cooperative, Inc. (the Cooperative), which comprise the balance sheets as of December 31, 2021 and 2020, and the related statements of revenue and patronage capital, and cash flows for the years then ended, and the related notes to the financial statements.

Management is responsible for the preparation and fair presentation of these financial statements in accordance with accounting principles generally accepted in the United States of America; this includes the design, implementation, and maintenance of internal control relevant to the preparation and fair presentation of financial statements that are free from material misstatement, whether due to fraud or error.

Our responsibility is to express an opinion on these financial statements based on our audits. We conducted our audits in accordance with auditing standards generally accepted in the United States of America. Those standards require that we plan and perform the audit to obtain reasonable assurance about whether the financial statements are free from material misstatement.

An audit involves performing procedures to obtain audit evidence about the amounts and disclosures in the financial statements. The procedures selected depend on the auditors' judgment, including the assessment of the risks of material misstatement of the financial statements, whether due to fraud or error. In making those risk assessments, the auditor considers internal control relevant to the entity's preparation and fair presentation of the financial statements in order to design audit procedures that are appropriate in the circumstances, but not for the purpose of expressing an opinion on the effectiveness of the entity's internal control. Accordingly, we express no such opinion. An audit also includes evaluating the appropriateness of accounting policies used and the reasonableness of significant accounting estimates made by management, as well as evaluating the overall presentation of the financial statements. We believe that the audit evidence we have obtained is sufficient and appropriate to provide a basis for our audit opinion.

In our opinion, the financial statements referred to above present fairly, in all material respects, the financial position of Wharton County Electric Cooperative, Inc. as of December 31, 2021 and 2020, and the results of its operations and its cash flows for the years then ended in accordance with accounting principles generally accepted in the United States of America.

*Bumgardner, Morrison & Company, LLP*

**Bumgardner, Morrison & Company, LLP**  
Certified Public Accountants  
Victoria, Texas

# FINANCIAL REPORT

## BALANCE SHEET

### ASSETS AND OTHER DEBITS

	As of 12/31/21	As of 12/31/20
Total Utility Plant in Service	\$70,755,789	\$67,535,576
Construction Work in Progress	573,253	1,055,939
<b>Total Utility Plant</b>	<b>71,329,041</b>	<b>68,591,514</b>
Accumulated Provision for Depreciation	(12,396,841)	(11,137,272)
<b>Net Utility Plant</b>	<b>\$58,932,200</b>	<b>\$57,454,242</b>
Investment in Assoc. Org. - Patronage Capital	\$21,246,803	\$20,518,313
Investment in Assoc. Org. - Other Non-Gen. Funds	545,952	516,211
Other Investments	2,460	2,460
<b>Total Other Property &amp; Investments</b>	<b>\$21,795,215</b>	<b>\$21,036,984</b>
Cash - General Funds	\$526,074	\$403,818
Temporary Investments	800,120	0
Accounts Receivable - Sales of Energy (net)	1,530,056	1,691,957
Accounts Receivable - Other (net)	22,598	149,909
Materials and Supplies	32,977	29,351
Prepayments	86,129	221,444
Other Current and Accrued Assets	0	0
<b>Total Current and Accrued Assets</b>	<b>\$2,997,954</b>	<b>\$2,496,479</b>
Other Deferred Debits	\$447,247	\$631,995
<b>Total Assets and Equities</b>	<b>\$84,172,616</b>	<b>\$81,619,700</b>

### MARGINS AND EQUITIES

Memberships	\$20,970	\$20,900
Patronage Capital	44,227,053	42,385,099
Operating Margins - Prior Years	0	0
Operating Margins - Current Year	1,070,297	1,784,559
Nonoperating Margins	75,544	57,395
Other Margins and Equities	60,915	60,370
<b>Total Margins and Equities</b>	<b>\$45,454,779</b>	<b>\$ 44,308,323</b>

### LIABILITIES AND OTHER CREDITS

Long-Term Debt	\$36,330,830	\$35,022,712
Accumulated Operating Provisions	28,905	23,905
Accounts Payable	1,596,535	1,494,935
Other Current and Accrued Liabilities	387,028	401,092
<b>Total Current and Accrued Liabilities</b>	<b>\$1,983,563</b>	<b>\$1,896,027</b>
Other Deferred Credits	\$374,539	\$368,733
<b>Total Liabilities and Other Credits</b>	<b>\$84,172,616</b>	<b>\$81,619,700</b>

### Equity as a Percent of Assets

**54.002%**      **54.286%**

### Equity as a Percent of Capitalization

**55.578%**      **55.852%**

## SUMMARY OF OPERATING STATEMENT

	As of 12/31/21	As of 12/31/20
Revenue	\$22,159,134	\$21,699,871
Less Cost of Power	15,201,292	14,428,636
Gross Margin	6,957,841	7,271,235
Distribution Expense - Operations	592,666	611,217
Distribution Expense - Maintenance	1,066,890	985,221
Consumer Accounting Expense	438,905	437,785
Customer Service and Information Expense	85,925	77,751
Sales Expense	93,098	90,258
Administration and General Expense	950,468	863,152
<b>Total Operations and Maintenance Expense</b>	<b>\$18,429,245</b>	<b>\$ 17,494,021</b>
<b>Depreciation, Tax and Interest Expense</b>	<b>\$2,000,095</b>	<b>\$1,913,820</b>
Depreciation and Amortization Expense	1,593,151	1,610,628
Interest Expense - Long-term Debt	2,254	9,310
Interest Expense - Other	\$3,595,500	\$3,533,758
<b>Total Depreciation and Interest Expense</b>		
<b>Cost of Electric Service</b>	<b>\$22,024,745</b>	<b>\$21,027,779</b>
<b>Operating Margins</b>	<b>\$134,389</b>	<b>\$672,092</b>
Nonoperating Margins - Interest	\$17,456	\$20,271
Nonoperating Margins - Other	58,088	37,124
Generation and Transmission Capital Credits	652,070	839,063
Other Capital Credits and Patronage Dividends	283,838	273,404
<b>Patronage Capital or Margins</b>	<b>\$1,145,841</b>	<b>\$1,841,954</b>

### 2021 REVENUE



### 2021 EXPENSES



## EMPLOYEE SERVICE MILESTONES

(LEFT TO RIGHT)

- Troy Korenek, 5 years
- Gene Puryear, 5 years
- Selena Delapena, 5 years
- Lee Roddy, 15 years
- Lance Kolafa, 5 years
- Shelly Schulz, 5 years
- Richard Arnett, 35 years
- Keith Beal, 25 years



## RETIREES FOR 2021



### WESLEY LANGE

ELECTRICAL SYSTEMS MANAGER  
52 YEARS OF SERVICE



### CLARENCE KUNZ

SERVICE LINEMAN  
49 YEARS OF SERVICE

Patsy Metting	46
Brenda Rodriguez-Moreno	44
Janice Kulcak	43
Luz-Maria Arredondo	41
Gary L. Raybon	38
Richard Arnett	35
Kenny Trochta	34
Donald Priesmeyer	33
Vance Jaks	28
Keith Beal	25
Juan Rubio	24
Mario Manriquez	23
Linda Bacak	23
Tim Bohuslar	17
Miriam Piloto	17
Willie Stavena (part-time)	17
Lee Wayne Roddy	15
Chris Cavness	14
Jody Domel	11
Selena Delapena	10
Nathan Danielson	9
Glenn "Dusty" White	8
Keaton Hubbell	7
Ricky Garza	6
Daniel Gutierrez	6
Brayden Payne	6
Andrew Rothbauer	6
Troy Korenek	5
Shelly Schulz	5
Gene Puryear	5
Lance Kolafa	5
Carol Diaz	4
Jayson McKeon	2
Ashley Wells	1
Matthew Abbott	1
William Tomlinson	9 months
Shane Langston	6 months

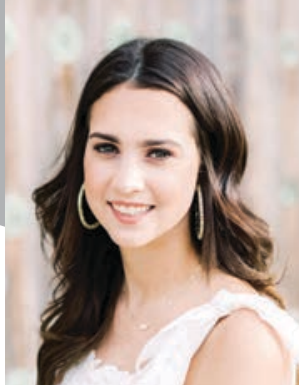
## YOUR WCEC HOME TEAM

# 2022 SCHOLARSHIP RECIPIENTS

---



**BRADEN AMESTOY**  
El Campo High School  
District 3  
Son of  
Sean and Stacy Amestoy



**KENDALL BEAL**  
El Campo High School  
District 6  
Daughter of  
Keith and Brandy Beal

Braden and Kendall received scholarships awarded in lieu of the Government-in-Action Youth Tour.

## Kendall was also awarded a scholarship from the Shirley Stubbs Feinstein Endowment Fund.

The Shirley Stubbs Feinstein Scholarship was initiated in 1987 by Frank N. Stubbs upon his retirement. Mr. Stubbs served as General Manager of Wharton County Electric Cooperative, Inc. from 1967-1987. The scholarship was funded initially through contributions made in lieu of retirement gifts to Mr. Stubbs and is in memory of his daughter Shirley Stubbs Feinstein. The scholarship is only available to the children of WCEC employees. Since its formation, 50 children of WCEC employees have received a scholarship to further their education. In 2020, Mr. Stubbs' daughter and son-in-law, Sugar and Mike Barnes, made a generous donation to the scholarship's endowment fund and the non-profit Shirley Stubbs Feinstein Endowment Fund was officially formed. This gift will ensure that Shirley Stubbs Feinstein will be honored for many years to come by WCEC and its employees.

## OPERATION ROUND UP 2021 CHARITABLE FUND DISTRIBUTION

---

100 Club of Wharton County  
All the Little Things Count  
Blessing Cup Storehouse  
Boys & Girls Club of El Campo  
Danish Heritage Preservation Society  
El Campo Art Association  
El Campo Community Events  
El Campo Youth Baseball

El Campo Medical Foundation  
El Campo Red Wave Booster Club  
El Campo Volunteer Fire Department  
Everyday Heroes, Inc.  
Helping Hands Ministry  
Hospice Support - El Campo  
Just Do It Now, Inc.  
Manna Meals

Matagorda Women's Crisis Center  
Northside Education Center  
Patriots & Heroes, Inc.  
Shall Not Hunger  
Texana Center  
Wharton County SPOT  
Wharton County Youth Fair

## 2021 COBANK SHARING SUCCESS GRANT RECIPIENTS

---

Matagorda County CASA | Pilgrim Rest After School Activities Program | Shall Not Hunger | Wharton County SPOT